



**EMIRATES-ODS**

اميرتس أوه دي اس



# BMS Brochure

UNLOCK THE POTENTIAL OF  
YOUR PROPERTY

# A RANGE OF SOLUTIONS AND SERVICES



Domain we cater	Services we offer	Maintain & Modernize	Monitor & Control	IoT & AI Services			
Building Management	Recurring Activity	Vendor neutral services. Improved performance by upgrading legacy systems with open protocols	Seamless & scalable integration of silo-assets. Real time monitoring of asset & energy performance.	IoT & AI Powered Digital Services utilizing Data Analytics & Machine Learning algorithms			
PLC and SCADA		On Call Service	On Site Maintenance	Energy Performance	Asset Performance	Predictive Maintenance	Virtual Facility Management
Fire Detection & Fire Fighting		Remote Support	Remote Maintenance	Tenant Energy Billing	Connected Elevators	Delta T Optimization	Air Quality Optimization
Security & Surveillance							
Emergency Light & Central Battery		One time Activity	Spare Parts	Modernize / Retrofit	Energy Audit	Energy Retrofit	Performance Consultancy
Elevators & Escalators	Compliance Audit		EV Charger				
EV Chargers							

# WELCOME TO EMIRATES ODS

Emirates ODS was founded in 2023, though ODS operations began in 2004 with the opening of ODS Global. Since its inception, the company has been dedicated in providing innovative and effective solutions for its esteemed clients. ODS Global has been focusing on life safety, security, automation & ELV solutions. Emirates ODS has been established as a separate company as a special initiative to focus towards UAE's government and semi-government entities by providing futuristic AI-enabled, sustainable, and smart technologies with proven methodologies.

As a **Category "A" Dubai Civil Defense, SIRA and TRA Approved** engineering, integration and maintenance service provider, Emirates ODS delivers integrated establishments which are technologically superior, sustainable, more energy-efficient and which deliver an even better ROI.

Our professional services enable us to quickly deploy, better manage our customer's networks and create revenue generating services. An equal opportunity employer, ODS Global has grown significantly and has built a reputation for delivering world-class Life Safety, BMS, Security and Access Control solutions across a wide range of buildings.

Key verticals of the Emirates ODS family include:

**ODSS Technical Services LLC:** Provides skilled and experienced personnel when it comes to systems installation and maintenance.

**ODSS Mechanical & Engineering Equipment Trading LLC:** Serves as the trading arm of the group and retains ownership of all product agencies.



**Category "A"  
Dubai Civil Defense**

**ADMCC**

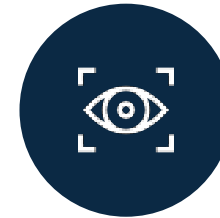
Abu Dhabi iMonitoring and Control Centre

ODSS are **Registered Service Providers** with the **Security Industry Regulatory Agency-Government of Dubai (SIRA)** and **Telecommunication Regulatory Authority (TRA)**

ODSS complies to ISO9001:2015



## THE COMPANY'S



### VISION

To become the preferred greenfield and the best brownfield service provider in the region, known for innovative and futuristic solutions and for setting world-class service standards for our customers.



### MISSION

To become the most sustainable and reliable service provider for both mandatory services and essential services, including intelligent building systems in the green and brown field markets; we strive to exceed customer expectations and to create long-standing partnerships.



### VALUES

**Integrity:** Honest and ethical conduct is the corner-stone of our business philosophy and the foundation of ODS Global organization.

**Innovation:** We continuously seek new and innovative ways to meet and exceed customer expectations.

**Operational Excellence:** We give the best value to our customers by continuously improving our product and solution offering.

**Safety:** We consistently uphold the highest standards of safety in everything we do.

**Teamwork:** We provide outstanding service through teamwork, experience, accountability and innovation.

# “An ounce of prevention is worth a pound of cure”

Construction projects are capital-intensive since most of technology and material costs go into developing an asset worthy of high returns on investment, as well as one that is safe for its occupants. In order for buildings to stay attractive and competitive in the market, all service systems constituting the building’s internal environment require various levels of periodic maintenance for optimal functioning.

Facility management teams, responsible for the maintenance of assets, look for specialized companies which can not only manage their facilities optimally but can also streamline building system operations, and thus cut the overall cost of maintenance.

**Emirates ODS can eliminate skill and knowledge gaps by offering an array of customized services from its portfolio.**

Our technical expertise and pace with technology help turn facilities into intelligent establishments. ODS Global offers the finest overall maintenance, IoT & AI based services for buildings/cities to achieve peak performance and deliver optimized, sustainable, safe and secure facilities. Our intelligent Integrated Command and Control Centre - iI3CCC can help manage facilities remotely and in real-time, thus enhancing the efficiency, safety, security and productivity of the premises. Control and monitoring of the facilities, using a dedicated centre, can be configured either at the client’s/ service provider’s or at ODS Global’s premises.

## Customer Values:

- **Enhanced Operational Performance & system availability:** Detailed diagnostics by our team of domain experts with vast experience on multiple OEM systems ensures, helps in precisely identifying issues & corrective actions, including parts requirements on time, thus ensuring higher system availability with enhanced operational performance and hence improved return on investment.
- **Better Business Decisions:** Our cloud-based AI-powered Netix.AI platform continually monitors and analyses installed systems and builds asset performance through real-time analytics via industry-aligned KPI dashboards, workflow analysis, and fully customized reports. Our solution keeps you constantly updated & informed about the performance KPIs and deviation, enabling informed decision-making much more accessible than ever before.
- **Healthy and Energy-Efficient Performance:** Proper operation and maintenance practices can reduce building energy usage by 5% to 30% across all climate zones. Our cloud-based AI-powered Netix.AI platform proactively screens for potential faults and energy wastage in the facilities to help make buildings more energy efficient without compromising comfort and industry standards on wellness, like indoor air quality.
- **Ensure business continuity with IoT at the core:** The combination of proactive fault identification and dynamic preventative maintenance planning, focusing on high-impact areas, helps manage and mitigate risk more efficiently. Life safety and security services leveraging the power of IoT enable technology and data analytics to improve comfort, safety, and sustainability, driving enhanced user experience with improved system availability.

# OUR DELIVERABLES



At **Emirates ODS**, our strength lies in our diligent team who is committed to providing a wide range of creative, end-to-end offerings in the field of Life Safety, AI and IoT based Building Management Solutions, Security and Access Control Systems, Fire Detections & Fire Fighting, Emergency Lighting & Central Battery, Elevators & Escalators, Smart Metering, EV Chargers.

We are proud of our leadership position and association with world leading brands in the industry, such as Teknoware, Johnson Controls, NETIX.AI to name a few, and we have access to multiple other brands and world-class solutions which help us to deliver the best and most reliable services.

Our unique product portfolio, array of services and quest for excellence enable us to quickly deploy, deliver and better manage both green and brown field projects, resulting in improved revenue generating services for our customers.

# THE BMS BRANDS WE MAINTAIN

NETIX.AI iBMS	Honeywell	Siemens	Centraline
Johnson Controls	Schneider	Metasys	DEOS.AG
Facility Explorer	Easy IO	Alerton	Delta
Distech Controls	Sauter	Trend	azbil

# THE PLC/SCADA BRANDS WE MAINTAIN

Schneider	GE electric	Allen-Bradley
SIMATIC	Mitsubishi	ABB



## IN TODAY'S WORLD, BUILDINGS ARE EXPECTED TO MEET NEW STANDARDS

In addition to being sustainable, resilient, hyper-efficient, and people-centric, they must also be people-driven. With the use of an intelligent building management system, you can take advantage of advancements in technology and IoT-enabled devices that can reduce operating costs, boost performance, improve occupant comfort, and increase the value of the building as a whole.

**You can maximize your building's efficiency with Emirates ODS's BMS solutions and technologies, which will help your building meet these demands and maximize its performance.**

### FACTS

Breaking the monopoly of BMS OEMs in the brownfield Emirates ODS successfully delivering an open and secure integration framework. By providing a collaborative platform that allows seamless integration with third-party systems. We enable building owners to create innovative custom solutions while preserving their existing infrastructure.

- Cloud and on-premises solutions enhance comfort, safety, and savings for facility managers
- Building management systems converge to the Internet of Things (IoT)- iIBMS, for better visibility and faster problem resolution
- Modernizing your BMS with Emirates ODS does not require a rip & replace of the entire system

"GREAT ACTS ARE MADE UP OF SMALL DEEDS."



**EMIRATES-ODS**  
اميرتس أوه دي اس

## EMIRARES ODS OFFERS BMS UPGRADES AND iIBMS TRANSITION FROM LEGACY SYSTEMS, MEANT TO DRIVE RESILIENCY IN 4 AREAS:

### CONNECTIVITY AND INTEGRATION FOR EFFICIENCY AND FLEXIBILITY

Whether a building is at partial or full facility capacity, operational efficiency will always be top of the mind. Digitization of your HVAC infrastructure will bring data from connected smart devices with your BMS applications, helping you keep your building running smoothly, ensuring comfort for occupants, and having the tools for fast diagnoses and resolution of events.

**10-15%**

**REDUCTION ON BUILDING ENERGY PROFILE**

### CONNECTIVITY ENABLES REMOTE OPERATIONS & ADVISORY SERVICES

Nowadays, there is a critical need for remote building operations. New IoT-enabled BMS solutions enable remote access for facility teams. Using powerful analytic tools, maintenance personnel can evaluate and fix a majority of problems remotely, reducing the number of site visits needed. Bringing BMS data securely to the cloud opens the door to different levels of support.

**40-50%**

**REDUCTION ON BUILDING OPERATIONAL COSTS**

### CYBERSECURITY HELPS PROTECT YOUR OPERATIONS

Cyber-attacks are becoming more common and are now a greater threat to operational stability than ever before. With the extensive facility and cloud connectivity of the newest BSM solutions, a strong cybersecurity framework is critical to protecting your facility operations and business.

**30-40%**

**ENHANCEMENT OF MANHOUR UTILIZATION THROUGH FAULT DETECTION DIAGNOSTICS**

### ENTERPRISE SECURITY ELIMINATES CORE RISKS IN YOUR OPERATIONS

Enterprise security is essential to eliminate many of the core risks associated with the new reality that is present in BMS environments. To mitigate that risk, it is essential to gain full visibility into all the operational assets that control the myriad of BMS systems inhabiting the building or campus. That includes HVAC, access control, fire suppression, lighting, physical security, elevators and other devices.

**80%**

**REDUCTION ON CRITICAL BREAKDOWNS USING PREDICTIVE CONDITION ALGORITHMS**

# YOUR ADVANTAGES OF BMS WITH EODS

## MAINTAIN MULTIPLE OEM

### Expertise and Experience:

At EODS, we offer unparalleled installation, maintenance, and upgrade expertise. Our expertise in various BMS allows us to identify and resolve issues regardless of brand or manufacturer, ensuring optimal performance. Join our esteemed community of 72 communities, 4 malls/retail centers, and 5 Hospitality properties, including the iconic Dubai Opera House with multiple BMS systems.

## OPEN-SOURCE APPROACH

### Customization and Scalability:

Our BMS solutions are tailored to meet your specific needs and requirements. Your BMS can grow with your facility with our custom design solutions and seamless integration of new equipment and third-party systems. With this flexibility, you can achieve operational excellence while maintaining alignment with your evolving needs. We successfully upgraded Demand Control Ventilation in prestigious master communities like Dubai Creek Harbour and Downtown..

## GOING BEYOND BMS WITH PLC / SCADA

### Single Point of Contact:

Simplify your experience with EODS as your single point of contact for not only BMS but also for PLC / SCADA related services. From maintenance and upgrades to troubleshooting and support, our dedicated team comprehensively understands your system. Enjoy seamless communication and coordination, allowing us to promptly address any issues or inquiries that arise with ODS by your side!

## GREATER VALUE FOR SAME PRICE PAID

### Cost Savings:

Partnering with EODS for an AMC brings you multiple cost-saving benefits. Our extensive knowledge of multiple BMS options allows us to offer an open-source approach, saving you on maintenance expenses and preventing major breakdowns. Furthermore, through our IoT platform, we identify opportunities for energy savings and efficiency improvements, leading to reduced operational costs in the long run. Unlock significant savings for your organization!



## ADAPTIVE IN A DISRUPTIVE SITUATION

### System Optimization:

EODS ensures your BMS is performing at its best. Our experts analyze its functionality and suggest upgrades or enhancements to optimize performance without disrupting your existing infrastructure. By staying up-to-date with industry trends and advancements, we recommend and implement new features or technologies that improve energy efficiency, occupant comfort, and overall system performance. Keep your CAPEX low while achieving an effective ROI.

## STAY AHEAD WITH FUTURE-PROOF SOLUTION

### Proactive & Predictive Maintenance:

Experience uninterrupted BMS operation with EODS's cloud platform connectivity. Our intelligent analytical platform continuously monitors your BMS, providing regular maintenance updates and inspections. By identifying potential problems before they escalate, we minimize downtime and costly repairs, extending the lifespan of your BMS and enhancing its overall reliability. Leverage the power of connectivity and data on our AI/ML-based platform for future asset and energy management of your properties.

## CLOUD EMPOWERED MAINTENANCE

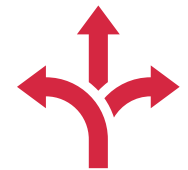
### Redefining Service Efficiency and Reliability:

EODS in partnership with NETIX.AI, provides advanced cloud-based intelligent analytical platform for your systems and assets. 24/7 automated remote monitoring, analytics driven enhanced preventive and predictive maintenance strategies helps to optimize asset performance and improve efficiency. Stay ahead with proactive intervention leveraging AI-driven insights tailored to meet your unique facility needs.

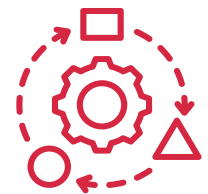
## ELEVATE EFFICIENCY & COMFORT WITH GREATER DELTA T

### Tailored approach to Building Chilled Water Delta T Management:

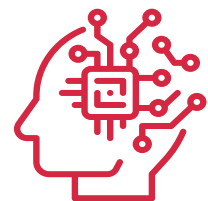
Our advanced analytics driven solution ensures that your system operates at its highest efficiency level by optimizing the temperature difference (**Delta T**) across your chilled water system. Thus, minimizing energy waste and unlock substantial savings on utility bills. We conduct thorough assessments of your building's chilled water system, evaluating its performance, identifying potential inefficiencies, and pinpointing areas for improvement for enhanced comfort & operational & energy efficiency.



MAINTAIN  
MULTIPLE OEM



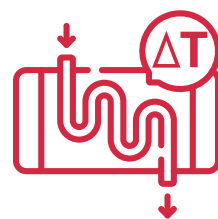
OPEN-SOURCE  
APPROACH



FUTURE-PROOF  
SOLUTION



COST SAVINGS



OPTIMIZE DELTA T



**A SINGLE WINDOW ACCESS TO SMART DATA**

# INTELLIGENT INTEGRATED COMMAND & CONTROL CENTRE – ICCC IN PARTNERSHIP WITH NETIX.AI CLOUD SOLUTION

**Emirates ODS** intelligent Integrated Command and Control Centre powered by Netix AI's cloud solutions caters to various facets of commercial/ residential & industrial domains, enabling clients to reap the benefits of optimizing their fixed asset operations and equipment efficiency in real time.

Our Integrated Command and Control Centre enables an enterprise-level view of all connected buildings in the real estate portfolio and automatically enhances the efficiency of assets and the safety of the building/city and its occupants, by utilizing advanced analytics and artificial intelligence.

**NETIX.AI's** Industrial exchange **NIX** is capable of integrating data from existing operational sites and onboard it on the customizable intelligent platform in order to deliver the best in terms of operational cost and efficiency.

## OUR SUITE OF APPLICATIONS

**1**

### BUILDING PERFORMANCE MANAGEMENT

- Aggregating bulk data types to generate meaningful insights and optimize energy use
- District level KPI monitoring and reporting
- Statistical energy savings analysis considering weather and occupational patterns
- Enables data-driven automation and controls strategy

**2**

### REMOTE ENTERPRISE BMS

- Configurable centralised platform for BMS
- Extensive integration capability, seamlessly connects any system irrespective of the type, make or protocol
- Remote access to insights from AI powered analytics

**3**

### FAULT DIAGNOSTICS AND ANALYTICS

- Centralised systems can preempt anomalies to facilitate for smooth facility management operations
- Interactive and real-time data representations
- Multilevel dashboard accessibility

**4**

### FACILITY AND PROPERTY MANAGEMENT

- Streamline CAFM suite
- Integrate Work Order Management
- Executive dashboards
- Automate and configure any process from work orders, alarms, gate pass to much more

# 10 EMAAR SHOPPING MALLS

**EMAAR Properties** is a renowned real estate development company founded in 1997; EMAAR has become synonymous with luxurious and innovative projects that have transformed skylines and communities. The company has played a significant role in shaping Dubai's landscape and has expanded its presence globally.

The company's portfolio encompasses residential properties, commercial developments, hotels, malls, and leisure destinations. EMAAR's projects are characterized by architectural excellence, state-of-the-art technology, and world-class amenities.

The company has successfully adapted to diverse markets, delivering projects that cater to local preferences and contribute to the development of sustainable communities.

They have interested in Emirates ODS to manage & maintain BMS in all their **10 Shopping Malls & Five-Star Hotels.**



## WE ARE MAINTAINING:

- |                         |             |                              |                      |
|-------------------------|-------------|------------------------------|----------------------|
| • Marina Mall & PIER 7  | JCI Metasys | • The Mira Town Center       | JCI FX               |
| • Gold and Diamond Park | Schneider   | • The Arabian Ranches 2 Souk | Honeywell Centraline |
| • South Village         | Schneider   | • The Leisure Center         | Honeywell Centraline |
| • The Spring Souk       | Schneider   | • The Meadows Souk           | Siemens              |
| • The Meadows Village   | Sauter      | • Time Out Market            | Honeywell            |





# 9 EMAAR FIVE-STAR HOTELS

EMAAR is involved in real estate development and has diversified its business interests. It operates Emaar Hospitality Group, managing a portfolio of hotels and resorts, and owns entertainment and leisure destinations like Dubai Opera and Reel Cinemas.

Emaar Hotels prides itself on delivering unparalleled guest experiences and upholding the highest standards of hospitality. Emaar Hotels continuously explores innovative concepts and incorporates the latest technology to enhance the guest experience.



## WE ARE MAINTAINING:

- |                                   |           |                             |         |
|-----------------------------------|-----------|-----------------------------|---------|
| • <b>Palace Hotel</b>             | Honeywell | • <b>Address Sky Views</b>  | Siemens |
| • <b>Dubai Hills Golf Club</b>    | Honeywell | • <b>Address Boulevard</b>  | Siemens |
| • <b>Address Fountain Views 1</b> | Siemens   | • <b>Address Downtown</b>   | Siemens |
| • <b>Address Fountain Views 2</b> | Siemens   | • <b>Vida Creek Harbour</b> | Siemens |
| • <b>Address Fountain Views 3</b> | Siemens   |                             |         |



# 72 EMAAR COMMUNITIES

At Emaar Community Management (ECM), delivers world-class services in all aspects of community and association management. ECM manages large-scale communities with tailor-made service delivery for customers.

They have interested in Emirates ODS to manage & maintain BMS in all their 72 communities.

## WE ARE MAINTAINING:

- **29 Boulevard** Johnson Control
- **8 Boulevard Walk** Honeywell
- **Boulevard Car Park** Siemens
- **Boulevard Central** Johnson Control
- **Boulevard Crescent** Honeywell Centra Line
- **Boulevard Heights** Sauter Controls
- **Boulevard Plaza Tower** Schneider Electric & Trend
- **Boulevard Point** Honeywell
- **Burj Views** Schneider Electric
- **Burj Vista** Siemens
- **Claren** Schneider Electric

# COMMUNITY DOWNTOWN

## WE ARE MAINTAINING:

- **Downtown Views 1** Johnson Control
- **Emaar Square Phase 1** Honeywell
- **Emaar Square Phase 2** Honeywell
- **Emaar Towers** Trend
- **Old Town Commercial Island (OTI)** Honeywell
- **Old Town Residences** Siemens & Schnieder
- **Opera Grand** Sauter Controls
- **South Ridge** Honeywell
- **Standpoint** Siemens
- **The Lofts** Siemens
- **The Residences 1 & 2** Trend
- **New Emaar Sales Center** Honeywell



# COMMUNITY EMAAR DUBAI MARINA

## WE ARE MAINTAINING:

- 52 | 42 Towers at Dubai Marina Honeywell
- Dubai Marina Al Majara Schneider Electric
- Dubai Marina Al Sahab Schneider Electric
- Dubai Marina Park Island Honeywell
- Dubai Marina Park Promenade Honeywell
- Dubai Marina Plaza Alerton
- Dubai Marina Quays Siemens
- Dubai Marina Towers Siemens
- Sunrise Bay Honeywell



# COMMUNITY EMAAR DUBAI CREEK HARBOUR

## WE ARE MAINTAINING:

- Dubai Creek Residences South & North Honeywell
- Creek Horizon Sauter Controls
- Creekside 18 Sauter Controls
- Harbour Views Alerton
- Marina Parking Johnson Control



# COMMUNITY EMAAR DUBAI GREENS & VIEWS

## WE ARE MAINTAINING:

- G&V-Golf Towers Siemens
- G&V-The Links Johnson Control
- G&V-The Fairways Siemens
- G&V-Mosela Siemens
- G&V-Tanaro Siemens
- G&V-Panorama Schneider Electric
- G&V-Greens Views 1&2 Siemens
- G&V-Greens Al Sidder 1,2,3,4 Siemens
- G&V-Greens Al Ghaf 1,2,3,4 Siemens
- G&V-Greens Al Jaz 1,2,3,4 Siemens

- G&V-Greens Al Nakheel 1,2,3,4 Siemens
- G&V-Al Dhafrah Honeywell
- G&V-Al Thayyal Honeywell
- G&V-Al Samar Honeywell
- G&V-Al Ghozlan Honeywell
- G&V-Al Arta Honeywell
- G&V-Al Alka Honeywell
- G&V-Una Siemens
- G&V-Turia Siemens
- G&V-Arno Honeywell
- G&V-Travo Siemens



# COMMUNITY EMAAR DUBAI HILLS ESTATE

**WE ARE MAINTAINING:**

- **Mulberry Phase 1 & 2** Johnson Control
- **Acacia** Sauter Controls
- **Park Heights 1& 2** Azbil
- **Park Square C1 & C2** Azbil
- **DHE Business park** Honeywell
- **Park Point** Johnson Control
- **Park Ridge** Schneider Electric
- **Collective 1** Schneider Electric
- **Collective 2** Schneider Electric
- **The Hills** Schneider Electric
- **Golf Views** Sauter Controls



# 19 DAMAC RESIDENTIAL TOWERS

The premier luxury property developer in Dubai! DAMAC Properties is part of DAMAC Group that has been shaping the Middle East's luxury real estate market since 1982, delivering iconic residential, commercial and leisure properties for sale across the region and beyond.

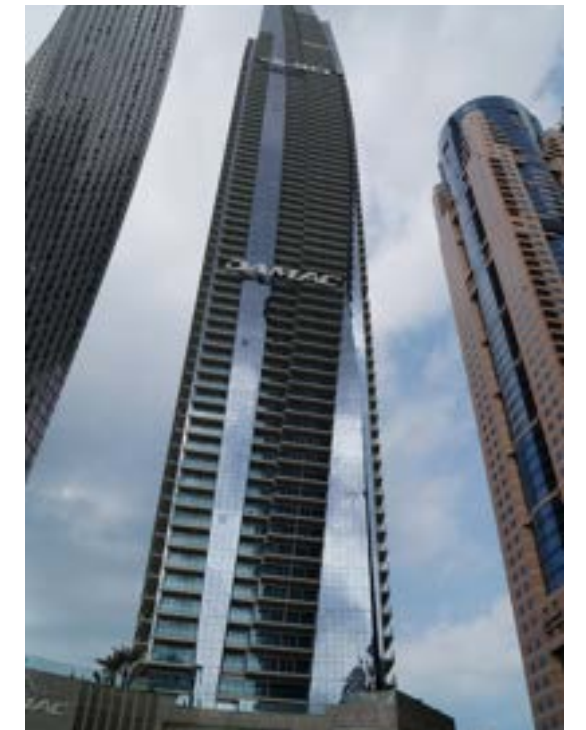
## WE ARE MAINTAINING:

- **Damac Heights** Honeywell Centraline
- **Ocean Heights** Honeywell
- **The Waves** Niagara Frontend / Schneider TAC
- **Lake View** Schneider
- **Suburbia** Honeywell Centraline / Niagara NETIX.AI



## WE ARE MAINTAINING:

- **Ghalia Tower** Schneider
- **Green Park A** Siemens
- **Tower 108** Schneider
- **Tenora** Honeywell EBI R430.1
- **Capital Bay/Deville Breeze** Honeywell Centraline
- **Damac Paramount A, B, D** Honeywell Centraline
- **Executive Bay** Honeywell Centraline
- **Upper Crest** Honeywell Alerton
- **XL Tower** Honeywell Centraline
- **Artesia (B,C,D)** Schneider
- **Carson (A,B,C)** Honeywell Centraline / Niagara NX
- **Golf Vita** Honeywell Centraline / Niagara NX
- **Merano** Honeywell Centraline / Niagara NX
- **Majestine** Sauter



# 7 HOSPITALITY *DAMAC* BUILDINGS

## WE ARE MAINTAINING:

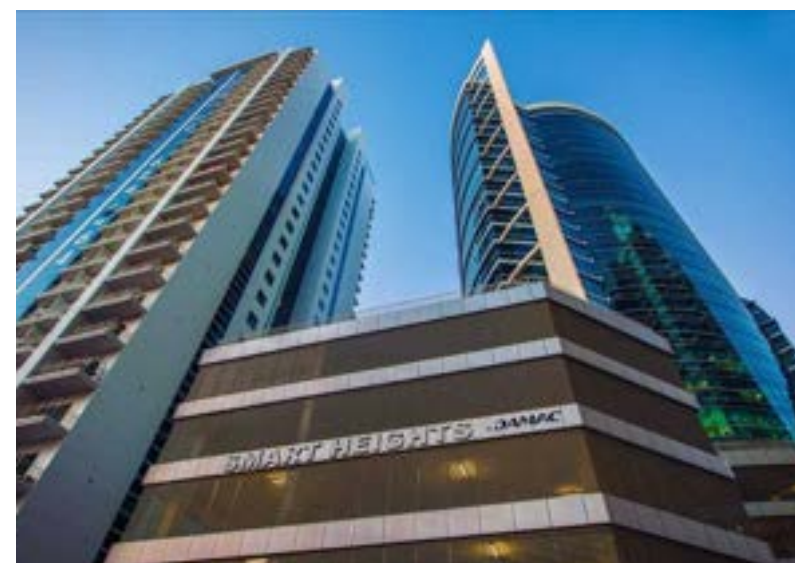
- Canal Views / Water Edge Honeywell Centraline
- CourJardin/ Cosmopolitan Honeywell EBI/ Netix AI
- Distinction Johnson Controls FX Workbench 6.1 (Facility Explorer)
- DMS Honeywell Centraline
- Avanti Honeywell Centraline / Niagara NX
- Bays Edge Honeywell Centraline
- PARAMOUNT TOWER Honeywell



# COMMERCIAL & *DAMAC* MIXED USE TOWERS

## WE ARE MAINTAINING:

- Smart Heights Johnson Controls Metasys
- Business Tower Honeywell Centraline
- Vogue SIEMENS (Software Description Designo insight V5.1)
- Prive Honeywell Centraline / Niagara NX





# SUCCESS OUTCOMES

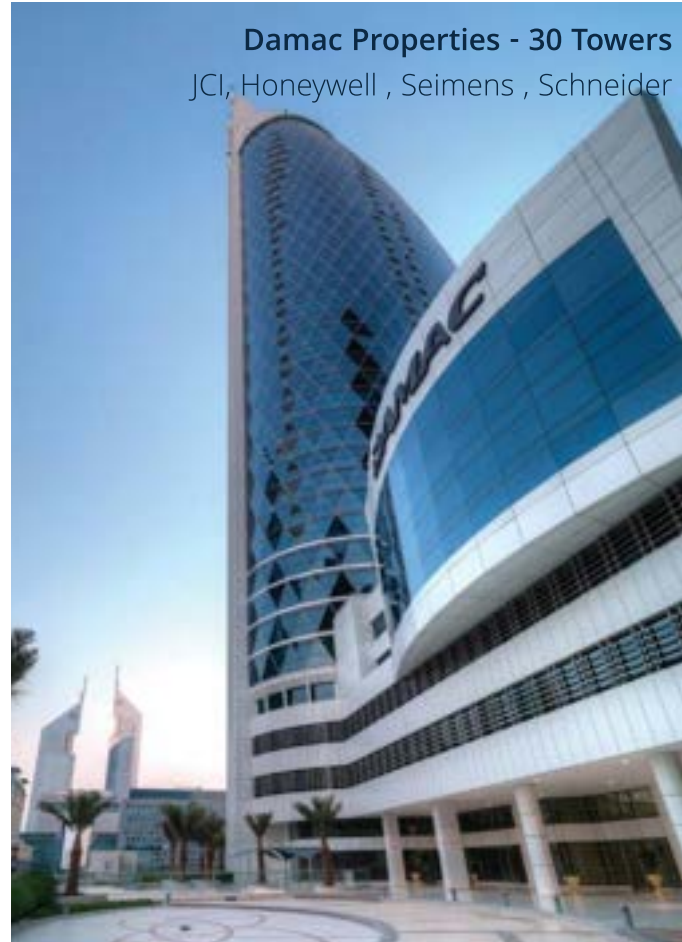


## RESIDENTIAL COMMUNITY & HEALTH SECTOR

19 Communities, 5 Master Communities with 20,000 villas & 200 building



Damac Properties - 30 Towers  
JCI, Honeywell, Seimens, Schneider



Mazaya Business Avenue - 3 buildings  
Lonix



Kings College Hospital London - Dubai  
Honeywell



# SUCCESS OUTCOMES



## EDUCATION SECTOR

University of Sharjah  
Schneider/Structure ware,  
Honeywell EBI, JCI, Metasys, Niagara



Emirates International School, Jumeirah  
Honeywell



Swiss International School  
Honeywell, Centraline, Trend



Emirates International School, Meadows  
Honeywell

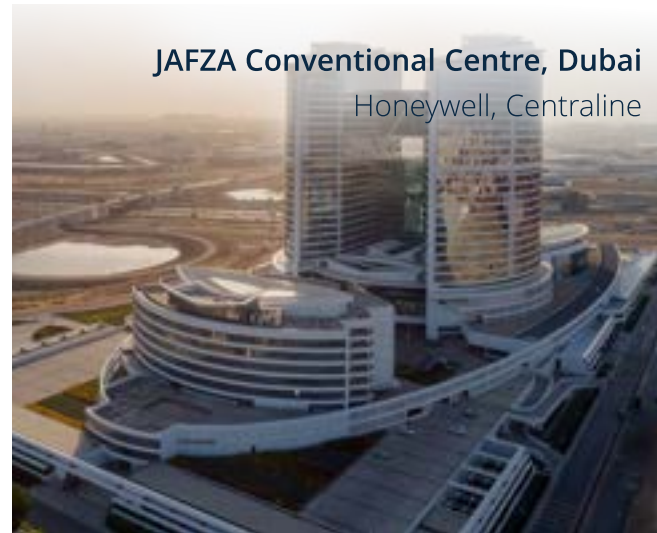


# SUCCESS OUTCOMES

## COMMERCIAL SECTOR



City Walk, Public Area, Dubai  
Honeywell, Centraline



JAFZA Conventional Centre, Dubai  
Honeywell, Centraline



Emarat HQ  
Johnson Control



77 Buildings for Etisalat  
JCI Easy IO , JCI Metasys , Siemens ,  
Honeywell, Alerton, Centraline



Lulu Umm Al Quwain  
Honeywell, Centraline

# PLC & SCADA REFERENCES



### WE ARE MAINTAINING:

- Dubai Opera SIMATIC
- EMAAR ETS Allen-Bradley
- MTC Pumping Station ABB
- Lusail City — Qatar Schneider, GE electric, Mitsubishi



Lusail City— Qatar  
Schneider, GE electric, Mitsubishi



Dubai Opera  
SIMATIC

# KEY BMS REFERENCES



## Residential

- The Royal Oceanic
- Fairmont Residences- South Residence
- Fairmont Residences- North Residence
- Balquis Residence-Dubai
- Macemacro-Windsor Manor Tower
- Tamweel Tower
- Goldcrest Views
- Hilliana
- Al Shera
- Lake Side Tower-JLT
- Reef Residence (2B+G+P3+36+R), JVC
- One Lake Plaza, JLT - Dubai
- Limestone House Residential-Retail Body Corporate
- Casa Flores
- Gemini Spelndor - Residential
- City Walk Phase 2 & 3 (14 Buildings)
- HCT RAK
- Sofitel Staff Accommodation
- Jeever Tower-Dubai
- Dubai Wharf
- Prospect Heights-Buildings
- Emirates Crew Accommodation 1-5
- DSO-Dubai (Block-1 & 2)
- Noor Al Safa , Jaddaf - Dubai
- Soul Avenue
- MBL Residence (K2), Cluster K, JLT
- RT11 Cleopatra Tower (B+G+12+RF)
- Shoreline Building 7 & 8, Palm Jumeirah
- Al Haseer: 2B+G+10+2RF, 131 units
- Al Nabat: 2B+G+9+2RF, 120 units)
- Sobha Hartland Greens Phase 3 (Bldg 5,6)
- Q Residence, Al Raha Beach
- Al Rimmel Tower A & B, Al Jaddaf
- University Of Sharjah (9 Campus Buildings)
- Vision Tower
- Sobha Creek Vistas, Sobha Hartland
- Sparkle Tower (B3+G+29+14+4), Dubai Marina
- The 8, Palm Jumeirah
- Hamani Residences, JVC
- Sarh Al Emarat Tower, Al Majaz 2
- Verve (Bassam Tower)
- Al Seef Meraas Project
- Data Center 1,2,3 & 4, DIFC
- Deira Waterfront Development
- ICP Mall @ International city
- Al Khail Plaza, Al Khail Road
- Victoria International School, Al Taawun
- RTA Multistory Car Parking Umm-Ramool

- RTA Garhoud Marine
- 23 Marina Tower at Dubai Marina

## Retail Outlet / Mall

- International City Pavillion (ICP)
- Zero 6 (Six) Mall, Jurina
- Mall of Umm Al Quwain
- Blue Waters, The Beach Retail

## Transportation/ Gov Entity/ Logistics/Warehouse

- Al Quoz Bus Depot and Accommodation RTA Multistory RTA
- Sharjah Transport HQ Building (SRTA)
- Landmark Omega Distribution Centre Warehouse, Dubai Sout

## Hospitality

- Villa Rotana Hotel Apartments
- The St. Regis Downtown Hotel, Marasi Drive
- Novotel Bur Dubai
- NOVOTEL Sharjah Expo Centre
- Marriott Executive Apartments Dubai Creek,
- Rigga Al Buteen St. Creek
- Al Khoory Atrium Hotel, Al Barsha First
- Royal Continental Hotel Dubai
- Millennium Mont Rose Hotel Apartments
- Millennium Hotel, Al Barsha
- Millennium Atria Hotel, Business Bay
- JA Ocean View

## Education/ University

- HCT, Abudhabi,
- HCT Fujairah
- Diyafah International School – Abu Dhabi
- AL DHAFRA Provis Schools - Dalma School
- AL DHAFRA Provis Schools Zayed City School
- AL DHAFRA Provis Schools Ghayathi New School

# KEY BMS REFERENCES

## Residential/ Mix Use Buildings

- Damac Various 30 Buildings
- Montrose Residences-A
- Belgravia 2
- Clayton Residency, Business bay
- Hamilton Residency, Business bay
- Mayfair Tower, Business bay
- Mayfair Residency, Business bay
- The Atria Principal, Business Bay
- The Atria Residences, Business Bay
- The Burlington Tower, Business Bay
- Zahra Residential Apartments (Plot 15), Townsquare
- Safi Residential Apartments (Plot 16), Townsquare
- Hayat Boulevard Buildings (Plot 7, G+P+8), Townsquare
- Rawda Residential Apartments (Plot 32-33), Townsquare
- Emaar Accommodation (Al Qudra), Plot-35, Townsquare
- Zahra Breeze Residential Apartments (Plot 8), Townsquare
- Jenna and Warda Apartments (Plot- 9-10), Town Square
- UNA Apartments (Plot 27A), Townsquare
- Topaz

## Commercial Buildings

- Mazaya Business Avenue AA1
- Mazaya Business Avenue BB1
- Mazaya Business Avenue BB2
- Al Manara Tower, Business Bay
- HDS Tower (3B+G+39+R), Cluster F, JLT
- Opal Tower, Business Bay
- B2B Tower
- Tamani Arts
- JAFZA Convention Centre (Tower-1, 2 )
- Convention Centre)
- Al Zahrawi Building 33& 34, Dubai Healthcare City
- Gateway Building Media City (Bank of Sharjah)
- Emirates General Petroleum Corp. (Emarat), Head Office
- Al Mezan Tower
- 11 Esteem Banks

# CASE STUDY



Integration of 14 Buildings (Phase 2 & 3)  
City Walk - The United Arab Emirates

## THE CHALLENGE

The Meraas real estate portfolio comprises property development sales and asset management across Dubai. City Walk by Meraas is an open, design-inspired neighborhood in the heart of Dubai with 14 buildings in the cluster of Phase-2 and Phase-3. Meraas brings together the best industry digital experts, assets and platforms with a unique service and operating model by integrating all the 14 buildings in a central server to monitor and control the HVAC and Lightings.

## THE PROJECT

The integration of 14 buildings to the Central Server using Netix Unview to monitor, control and schedule the devices in a planned and efficient manner. The project is inclusive of more than 14000 IO Points.

## THE PRODUCT

NETIX Unview SUPRA Software

## THE SCOPE

- Integration of different manufacturer chiller units across 14 buildings of Phase-2 and Phase-3 and ---connecting to the Central Server.
- Supply, Installation and T&C of Server and Unview SUPRA Software.
- Discover and Map the BMS equipment points from Controllers & Gateways installed across 14 ---different buildings via BACnet.
- Generating different levels of alarm and mailing the unacknowledged and pending alarms to the ---MEERAS CAFM Server, client and FM team
- Completed system validation:
  - Design qualification (DQ)
  - Installation qualification (IQ)
  - Operational qualification (OQ)

## SYSTEM CONTROLLED / MONITORED

- Chilled Water System - 16 sets
- FAHU - 18 nos
- FCU - 846 nos
- Fans - 230 nos
- Pump - 76 nos
- Fire Pump - 5 sets
- PMU - 36 nos
- Lighting Control - 1322
- Circuits Generator & UPS - 5 nos
- Fire Alarm - 155 zones

# CASE STUDY



Upgradation/Integration of 3 buildings Mazaya  
Business Avenue - The United Arab Emirates

## THE CHALLENGE

Since End user Saga International and Facility Management M/s Concordia was managing multiple assets all over 3 buildings they look for a system which can integrate, control and schedule all the HVAC equipments and Lighting and Monitor Electrical, Plumbing and equipments to a single software platform which gives more analytical information which supports them to operate and maintain effectively and efficiently. Saga International looking for a solution which can upgrade the BMS with the latest platform and push the data to their analytical platform in unified protocol format in a real time. Saga International

## THE PROJECT

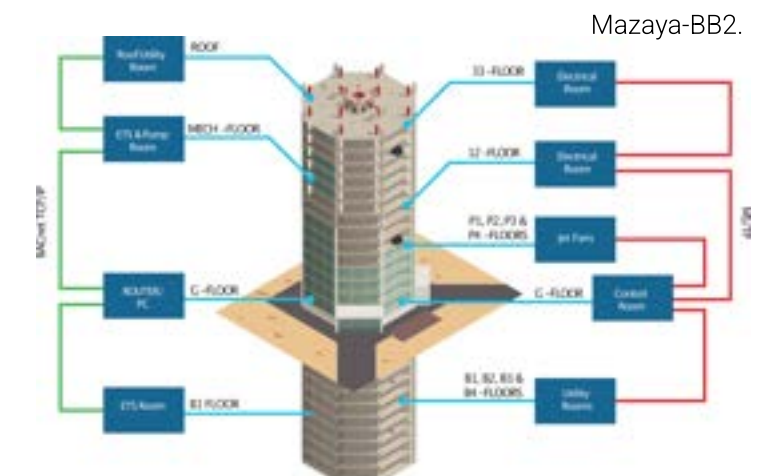
Integration/ Upgradation of different units across 3 buildings (Mazaya Business Avenue - AA1, BB1 & BB2). The project was carried out in the Middle East Region, The United Arab Emirates and is inclusive of more than seven thousand IO points.

## THE SCOPE

- Integration of different units across building (Mazaya Business Avenue - AA1, BB1 & BB2) and connecting to PC.
- Supply, Installation and T&C of PC & Unview SUPRA Software.
- Discover and Map the BMS equipment points from Controllers & Gateways installed across buildings via LoN Works Network protocol.
- Completed system validation:
  - Design qualification (DQ)
  - Installation qualification (IQ)
  - Operational qualification (OQ)

## SYSTEM CONTROLLED / MONITORED

- Fans
- Pump
- Lighting Control
- Heat Exchanger & CHW Pump
- Fire Pump & Damper
- FAHU & FCU



# CASE STUDY



## THE CHALLENGE

The Swiss International School in Dubai (SISD) features an eco-friendly campus, high energy efficiency standards, and state-of-the-art sports facilities. In the region, it has one of the best boarding houses. This 70,000-square-meter campus has a capacity of 2,000 students and is designed and engineered for the highest expectations. In the UAE & GCC, 70% of the peak electricity load is due to cooling buildings, which has grown by 5 percent annually over the past six years. As part of its eco-friendly infrastructure design, the end-user sought a solution to integrate multiple vendor/protocol equipment, offering an advanced graphical user interface and high processing power. Reduced latency and optimized.

## THE PROJECT

Single centralized supervisory console to control and monitor each parameter of the primary and sports block operations in real-time using Netix.AI advanced graphical UI with high processing capabilities including integration of two different make BMS system with more than 5000 data points.

## THE SCOPE

- Centralization, normalization, and integration of the data streams from equipment and system-level building services across diverse legacy OEM systems – Trend and Centraline
- Parameters to be mapped from 50 controllers and gateways and data to be exposed in a unified BACnet protocol format
- Integration be carried out without disturbing the existing data interface points to ensure smooth operations.
- To assist in energy savings at no negative effect to comfort level.
- Enable the end-user to optimize their operations with early detection of equipment failures and thus minimize the energy profile of the two buildings.

## SYSTEM CONTROLLED / MONITORED

- Heat Exchanger
- Chilled water pump
- FAHU
- AHU
- FCU
- Fire alarm system
- Central battery emergency lighting system
- Fire pumps
- Fans
- Fire dampers
- Power monitoring unit

# CASE STUDY



## THE CHALLENGE

Emarat is an oil and gas provider of choice for the public and private sectors in the United Arab Emirates. These include large corporations, aviation industries, national security bodies, and key infrastructure entities. Emarat Head Office is a multi-story building. It is an iconic/historic structure overlooking Dubai's business district. Over 50 percent of the peak electricity load in the UAE & GCC can be attributed to building HVAC systems over the past few years. Poor and ineffective BMS maintenance results in higher energy costs, lower system performance, and longer equipment life. To overcome these challenges and keep in line with the organization's initiative to operate as per all national and international standards, help reduce the impact on the environment & improve energy efficiency, the end-user was looking for a vendor-neutral solution that could integrate into multiple systems and equipment and reflect the COV (change of value) occurrence and control parameters in real-time while minimizing overall latency of the system and enhancing the buildings energy profile.

## THE SCOPE

- The supply and T&C of the intelligent integrated building management system
- Configuration of Various levels of alarms, notifications, event logs, time scheduling and trend analysis.
- Customized user interface, which features a graphical navigation system that allows the facility management team to access reports and logs.
- Get data from existing multiple vendor equipment and integrating diverse systems onto a unified secure Niagara platform

## THE PROJECT

A unified approach was taken delivering an iBMS solution tailored to the end user's requirement. NETIX.AI provided an advanced front-end integration powered by the Niagara Framework which delivers ultra-low latency and high computational capabilities.

## SYSTEM CONTROLLED / MONITORED

- Chilled water pump
- Fire alarm system
- Chiller
- FAHU
- AHU
- FCU
- VAV
- Central battery emergency lighting system
- Power monitoring unit
- Fire dampers
- Fire pumps
- Fans

# CLIENTS TESTIMONIALS



“

## LETTER OF APPRECIATION FOLLOWING BMS INTEGRATION

"The challenge in the contract was to integrate data from 14 buildings without disturbing the front end work stations, as well as correct mapping and providing email alarm alerts in real time. The work was completed on time and to our complete satisfaction. The integrated solution has been in use for over 2 years and working very satisfactorily. Engie Solutions are very happy with the solutions provided using Niagara's open framework solutions and the dedicated team of ODS Global".

*Joseph Yousef  
Area Manager - Operations – CITY WALK*

“

## LETTER OF APPRECIATION FOLLOWING BMS UPGRADE

To upgrade and unlock an operational BMS and enhance its functionality is a true challenge. Its highly commendable what Netix and Tridium have accomplished, and we confirm that they have exceeded our expectations. The new BMS system provides us excellent tools to monitor MEP systems, react in time to identified issues, optimize energy saving features and deal more efficiently.

*MANOJ KAKAD  
Manager – Technical, SAGA International*

“

## LETTER OF APPRECIATION FOLLOWING BMS TRANSFORMED

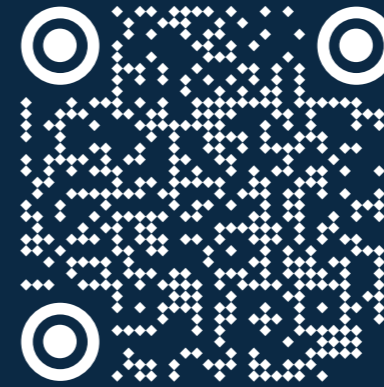
The NETIX.AI intelligent GUI is the android solution which has transformed our locked BMS into an open, scalable and brand agnostic system. With minimal manpower we can oversee the entirety of our systems through an advanced user- friendly graphical interface. It's truly amazing and commendable that Netix and Tridium's Niagara Framework has made it possible to optimize operations, enhance energy savings and increase the well-being of occupants – students and teachers to name a few, all through an opensource intelligent platform."

*Ashfaq Khan  
Head of FM & HSO. SWISS International School*

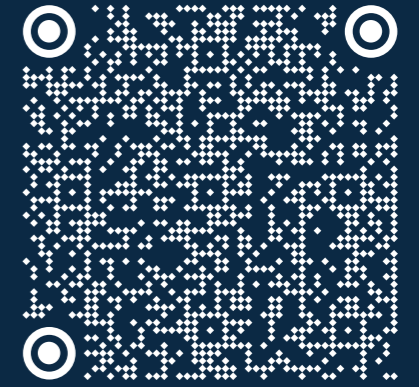


**EMIRATES-ODS**  
الإمارات - أو دي إس

## SCAN TO LEARN MORE ABOUT



OUR SERVICES



OUR AI POWERED iCCC

## DELIVERING SMART INTELLIGENT BUILDINGS

### Dubai

- Suite No. 404-410, Diamond Business Centre, Block A, Arjan, Dubai, UAE, PO Box: 37072,

### Abu Dhabi

- Office No. 703, Silver Wave Tower Commercial, Al Zahiya, Abu Dhabi